



The school's vision

Jesus said: "I have come that they may have life, life in all its fullness." This teaching is at the heart of our school community. Through a culture of positive learning experiences rooted in core Christian values, our students will be ready and able to lead fulfilling lives.



This evening we want to:

- Introduce you to key people.
- Share our aims and expectations.
- Describe some of our routines and procedures
- Provide you with information for a successful start to Year 7.
- Give you an opportunity to ask questions.





Ofsted 2021

- *'All staff have high expectations of what pupils can achieve.'*
- *'The school has a culture of continuous improvement. Senior leaders and governors are passionate about giving pupils the best education and care possible. This commitment permeates throughout the school. There is a strong focus on the quality of education.'*



SIAMS 2018

- *'Pastoral care is exemplary in reflecting the school's vision and has benefitted from the restructuring of roles and responsibilities.'*
- *'The Christian ethos has been revitalised and is empowering staff and students to grow in their leadership roles through clear expectations and a culture of listening and attention to wellbeing.'*



Key people

Year 7 Pastoral mentor

Ashley House –
Mrs Collingbourne

ALZ
ARZ

Livingstone House
- **Mrs Robertson**

LLZ
LRZ



Shaftesbury House –
Miss Evans

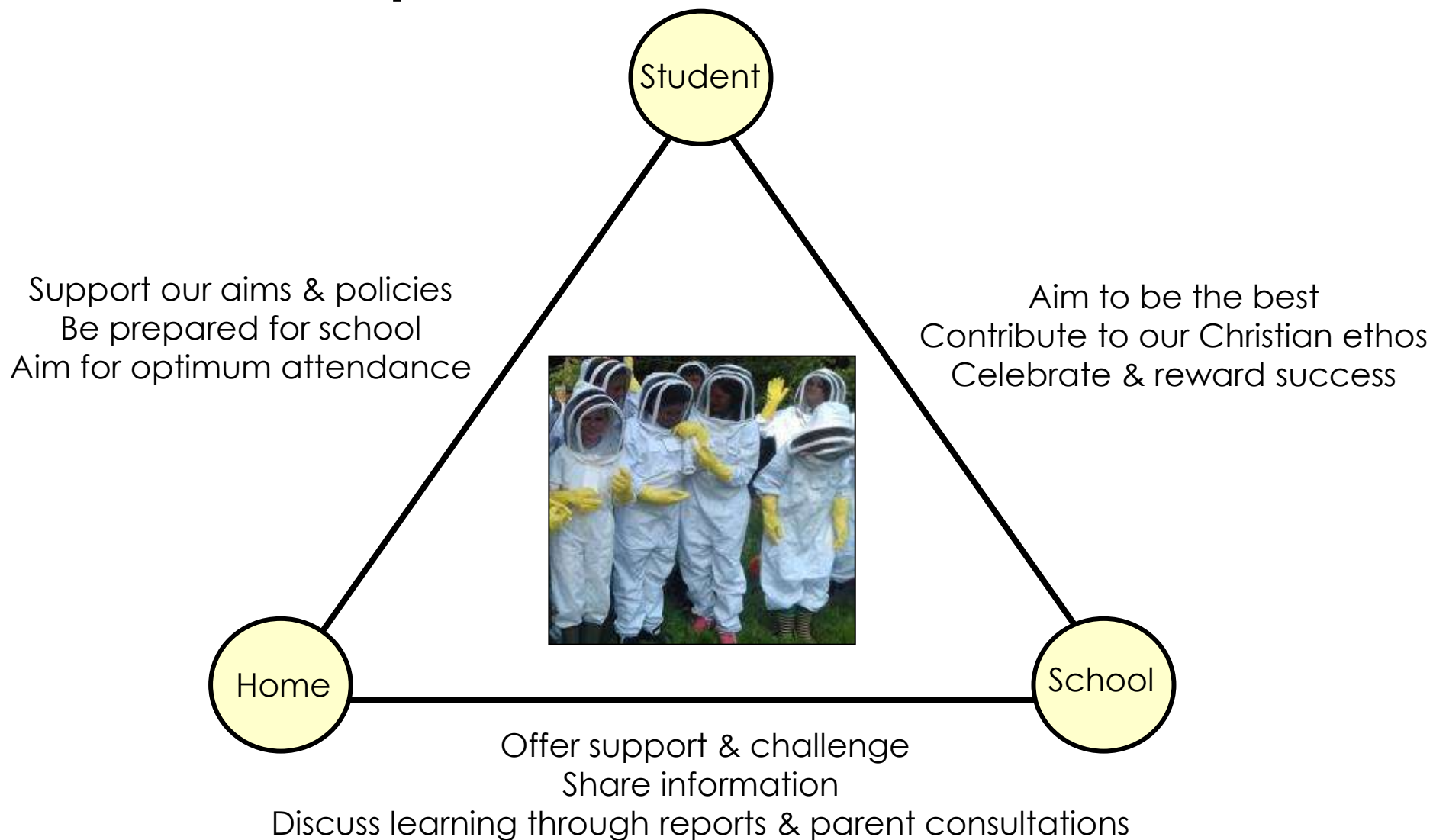
SLZ
SRZ

Cheshire House -
Mrs Whittaker

CLZ
CRZ



The expectations we have of each other





Students are successful when they:

Treat everyone with respect

Offer support to others

Try new things

Make mistakes and learn from them

Show respect for our environment



Are well organised and prepared for learning

Complete homework and meet deadlines

Try their best in everything they do

Take advantage of opportunities

Ask for help when they need it



Creating Year Z

220 Year 6 pupils from 31 primary schools - Split into 8 tutor groups

- Friendships
- School
- Additional Needs
- Parent/carer requests
- Feeder school requests
- Siblings

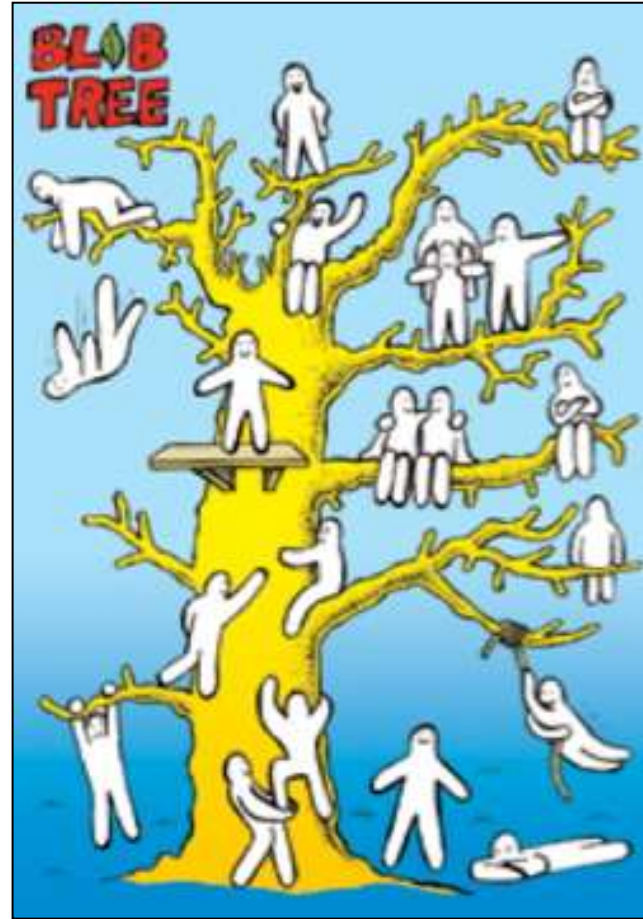


What happened today?

8.30 – 9.00	Arrival
9.00 – 10.00	Welcome and meet tutor
10.00 – 10.45	Tour of the school
10.45 – 11.00	Break in main hall
11.00 – 11.25	Music presentation in main hall
11.25 – 12.10	Wellbeing, expectations and Art
12.10 – 13.00	Lunch and PE activities
13.00 – 13.55	Lesson
13.55 – 14.35	'Values and vision' led by antibullying ambassadors
14.35 – 14.45	Departure



"Jesus said that I have come to give life, life in all its fullness"





Catering and Travel

- Our catering will be provided by Miquill
- Check the bus routes
- Cyclists must wear a helmet
- Have a back up plan.
- Car parking before and after school.



Persistent absence

- Students are persistently absent if their attendance is less than 90%
- This means they are missing at least 1 day every 2 weeks
- Over 5 years this would equate to half an academic year!

Every day counts



To go on
holiday



To go on
day trips



To go
shopping



To celebrate
a birthday



To babysit
younger
siblings



When
siblings are
are ill



Minor illness
or tiredness



End of the
week
or term



FAQ

- When do I start?
- Where do I go?
- Do I need PE kit on the first day?
- What are the Lunch arrangements?
- Can phones be used?
- When are bus passes issued?
- When are photos taken?
- What's happening on the summer fun days?



FAQ

- When do they start? – **Wednesday 6th Sept at 8.45**
- Where do they go? – **Here in the main hall**
- Do I need PE kit on the first day? – **No**
- What are the Lunch arrangements? – **Split breaks**
- Can phones be used? – **No**
- When are bus passes issued? – **In first week**
- When are photos taken? – **Thursday 7th September**
- What's happening on the summer fun days? **30th - 31st August**



Expectations

Kindness

Try Your Best

- Promote the value of learning
- Monitor online activity – limit screen time, monitor mobile phone use, no phones with homework, think about the damage to mental health
- Attendance is key to success
- Back the school and its decisions – if you disagree contact us and we will listen, we may not always agree
- Don't challenge the school in front of your children as it may breed challenge from them in school



Where next?

Ashley

Hub 2

Cheshire

The Main Hall

Shaftesbury

The Deli

Livingstone

Room 50