



# Welcome



## The school's vision

Jesus said: "I have come that they may have life, life in all its fullness." This teaching is at the heart of our school community. Through a culture of positive learning experiences rooted in core Christian values, our students will be ready and able to lead fulfilling lives.





## Aims for the evening

- Introduce you to key people
- Share our vision, ethos and expectations
- Describe some of our routines and procedures
- Provide you with information for a successful start to Year 7
- Give you an opportunity to ask questions





# Key people

## Year 7 Pastoral mentor – Mrs Lancaster

Ashley House –  
**Mrs Collingbourne**

ALB  
ARB

Livingstone House  
- **Mrs Robertson**

LLB  
LRB



Shaftesbury House –  
**Mr Atkinson**

SLB  
SRB

Cheshire House -  
**Mrs Whittaker**

CLB  
CRB



## SIAMS 2018

- 'Pastoral care is **exemplary** in reflecting the school's vision...'
- 'The Christian ethos has been revitalised and is empowering staff and students to grow in their leadership roles through **clear expectations and a culture of listening and attention to wellbeing.**'

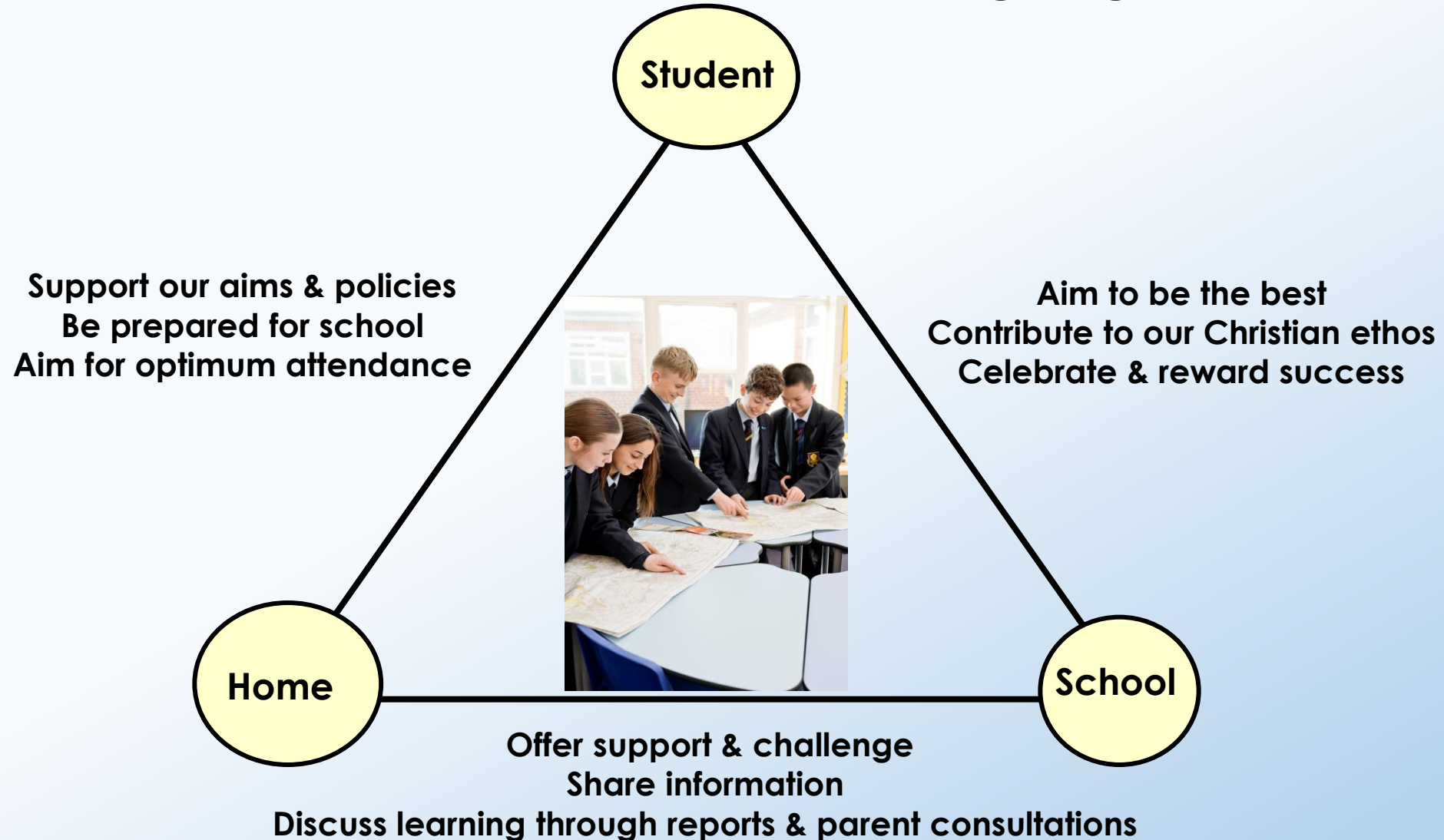


# Ofsted 2021

- *'All staff have **high expectations** of what pupils can achieve.'*
  
- *'The school has a culture of continuous improvement. Senior leaders and governors are passionate about giving pupils the best education and care possible. This commitment permeates throughout the school. There is a **strong focus on the quality of education.**'*



# Expectations and Working Together





# Some messages from current Year 7 (A) students

Dylan & Oleksandra



## Students are successful when they:

Treat everyone with respect

Offer support to others

Try new things

Make mistakes and learn from them

Show respect for our environment



Are well organised and prepared for learning

Complete homework and meet deadlines

Try their best in everything they do

Take advantage of opportunities

Ask for help when they need it



## Mr Nicholas

## Creating Year B

220 Year 6 pupils from 27 primary schools - Split into 8 tutor groups

- Friendships
- School
- Additional Needs
- Parent/carer requests
- Feeder school requests
- Siblings

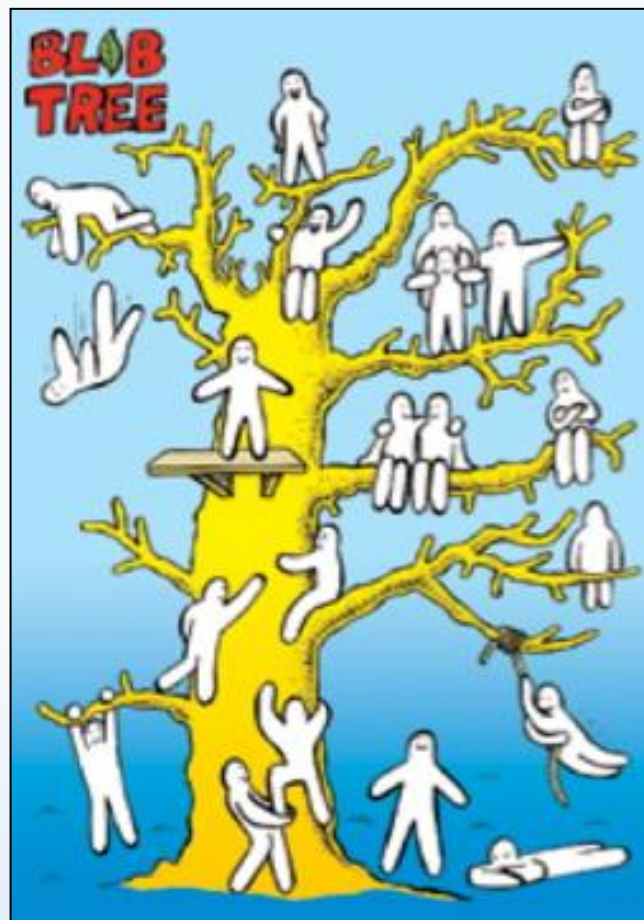


## What happened today?

8.30 – 9.00	Arrival
9.00 – 10.00	Welcome and meet tutor
10.00 – 11.00	Tour of the school
11.00 – 11.15	Break in main hall
11.15 – 11.45	Music presentation in main hall
11.45 – 12.25	Lunch
12.25 – 13.25	Lesson
13.25 – 14.35	PE activities
14.35 – 14.45	Departure



"Jesus said that I have come to give life, life in all its fullness"





## Catering and Travel

- Our catering will be provided by 'Innovate'
- Check the bus routes
- Cyclists must wear a helmet
- Have a back up plan.
- Car parking before and after school.



# Persistent absence

- Students are persistently absent if their attendance is less than 90%
- This means they are missing at least 1 day every 2 weeks
- Over 5 years this would equate to half an academic year!

# Every day counts



**To go on holiday**



**To go on day trips**



**To go shopping**



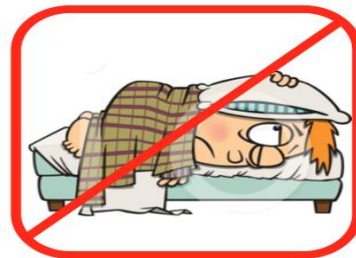
**To celebrate a birthday**



**To babysit younger siblings**



**When siblings are ill**



**Minor illness or tiredness**



**End of the week or term**



# FAQ

- When do I start?
- Where do I go?
- Do I need PE kit on the first day?
- What are the Lunch arrangements?
- Can phones be used?
- When are bus passes issued?
- When are photos taken?
- What's happening on the summer fun days?



# FAQ

- When do they start? – **Wednesday 3rd Sept at 8.45**
- Where do they go? – **Here in the main hall**
- Do I need PE kit on the first day? – **No**
- What are the Lunch arrangements? – **Split breaks**
- Can phones be used? - **No**
- When are bus passes issued? - **In first week**
- When are photos taken? – **Thursday 4<sup>th</sup> September**
- What's happening on the summer fun days? **27<sup>th</sup> – 28<sup>th</sup> August**



## Where next?

**Ashley**

Hub

**Cheshire**

The Main Hall

**Shaftesbury**

The Deli

**Livingstone**

Room 51