



The Bishop of Hereford's Bluecoat School

Welcome



The school's vision

Jesus said: "I have come that they may have life, life in all its fullness." This teaching is at the heart of our school community. Through a culture of positive learning experiences rooted in core Christian values, our students will be ready and able to lead fulfilling lives.





Aims for the evening

- Introduce you to key people
- Share our vision, ethos and expectations
- Describe some of our routines and procedures
- Provide you with information for a successful start to Year 7
- Give you an opportunity to ask questions





Key people

Year 7 Pastoral mentor – Mrs Dumbrell

Ashley House –
Mr Gibbons
ALC
ARC

Livingstone House
- **Mrs Robertson**
LLC
LRC



Shaftesbury House –
Mr Atkinson
SLC
SRC

Cheshire House -
Mrs Whittaker
CLC
CRC



SIAMS November 2025

- The needs of students are met with compassion, enabling them to thrive.
- Students show consistently positive behaviour, building warm, respectful relationships.
- A vastness of opportunity ensures that students develop as considerate individuals.

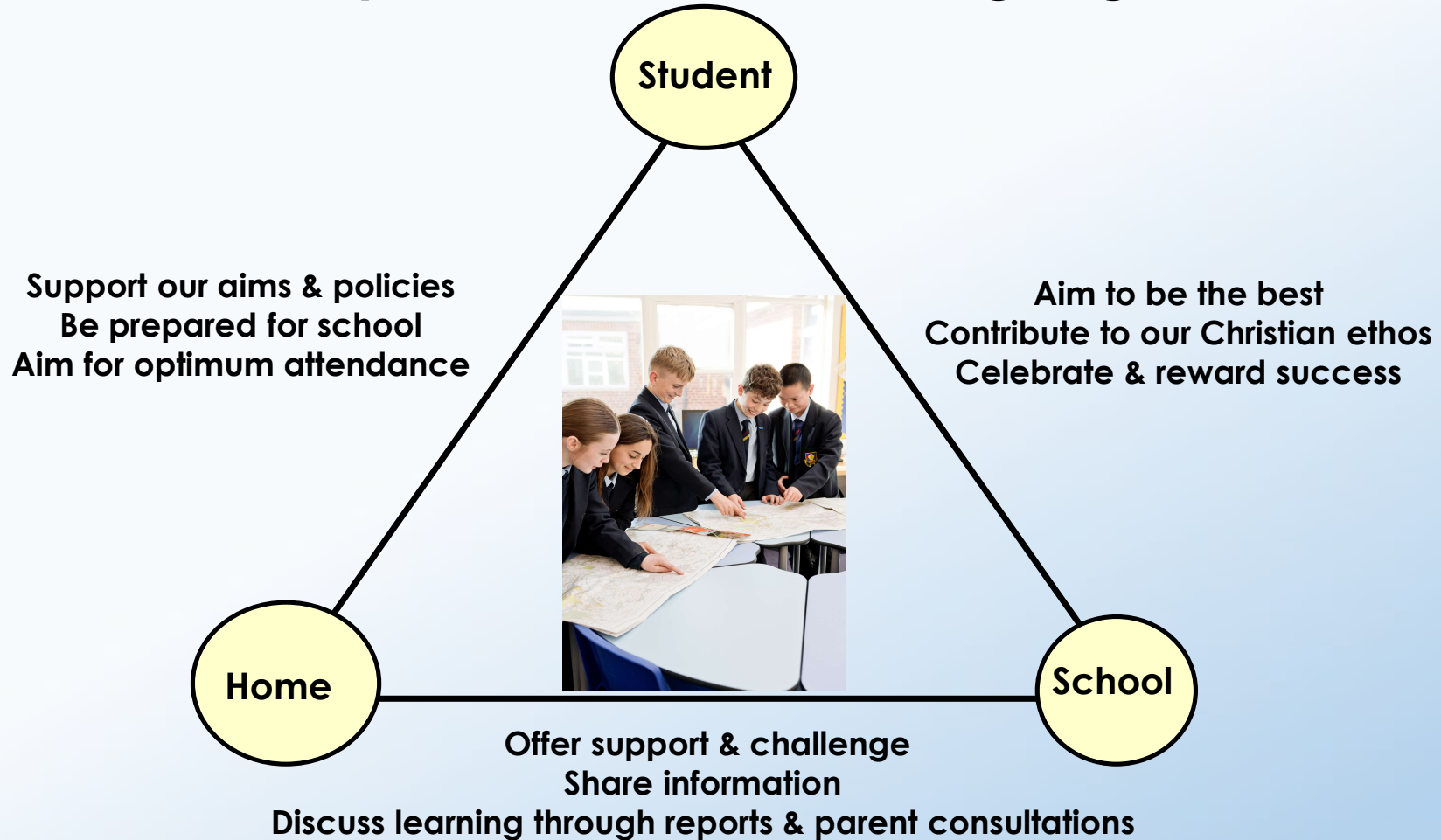


Ofsted 2026

- ..pupils are friendly, welcoming and eloquent. They are proud of their school.
- The school has high expectations of pupils' conduct.
- ..pupils work hard in lessons and know that bullying is not tolerated..
- ..the school is a calm and nurturing learning environment.



Expectations and Working Together





Some messages from current Year 7 (B) students

Sydney Jones and Dexter Cleland



Students are successful when they:

Treat everyone with respect

Offer support to others

Try new things

Make mistakes and learn from them

Show respect for our environment



Are well organised and prepared for learning

Complete homework and meet deadlines

Try their best in everything they do

Take advantage of opportunities

Ask for help when they need it



Mr Nicholas

Creating Year C

220 Year 6 pupils from 30 primary schools - Split into 8 tutor groups

- Friendships
- School
- Additional Needs
- Parent/carer requests
- Feeder school requests
- Siblings



What happened today?

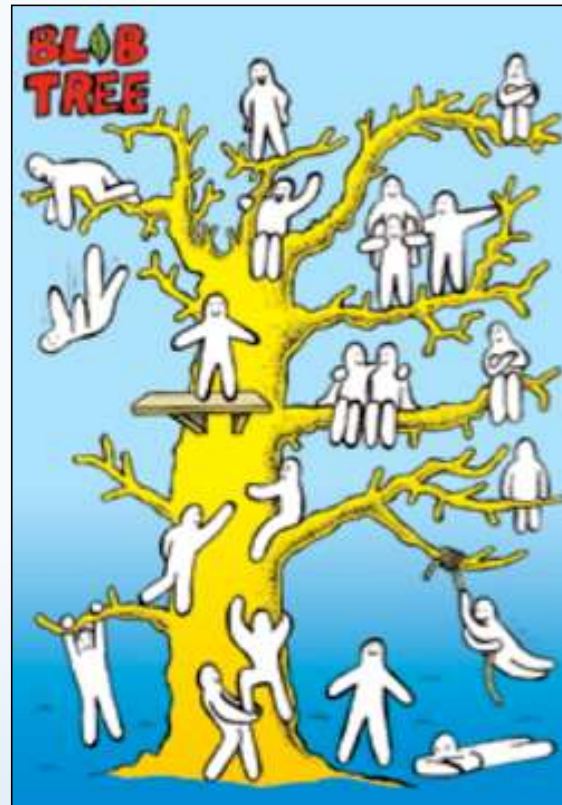
8.30 – 9.00	Arrival
9.00 – 10.00	Welcome and meet tutor
10.00 – 11.00	Tour of the school
11.00 – 11.15	Break in main hall
11.15 – 11.45	Music presentation in main hall
11.45 – 12.25	Lunch
12.25 – 13.25	Lesson
13.25 – 14.35	PE activities
14.35 – 14.45	Departure



The Bishop of Hereford's Bluecoat School



"Jesus said that I have come to give life, life in all its fullness"





Catering and Travel

- Our catering will be provided by 'Innovate'
- Check the bus routes
- Cyclists must wear a helmet
- Have a back up plan.
- Car parking before and after school.



Persistent absence

- Students are persistently absent if their attendance is less than 90%
- This means they are missing at least 1 day every 2 weeks
- Over 5 years this would equate to half an academic year!



Every day counts



To go on holiday



To go on day trips



To go shopping



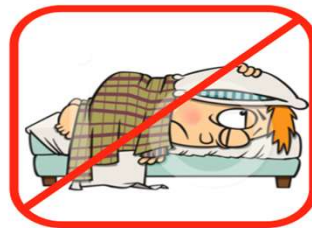
To celebrate a birthday



To babysit younger siblings



When siblings are ill



Minor illness or tiredness



End of the week or term



FAQ

- When do I start?
- Where do I go?
- Do I need PE kit on the first day?
- What are the Lunch arrangements?
- Can phones be used?
- When are bus passes issued?
- When are photos taken?
- What's happening on the summer fun days?



FAQ

- When do they start? – **Thursday 3rd Sept at 8.45am**
- Where do they go? – **Here in the main hall**
- Do I need PE kit on the first day? – **No**
- What are the Lunch arrangements? – **Split breaks**
- Can phones be used? - **No**
- When are bus passes issued? - **In first week**
- When are photos taken? – **Tuesday 8th September**
- What's happening on the summer fun days? **26th – 27th August**



Where next?

Ashley Hub 1	Cheshire Hub 2
Shaftesbury The Deli	Livingstone Main Hall